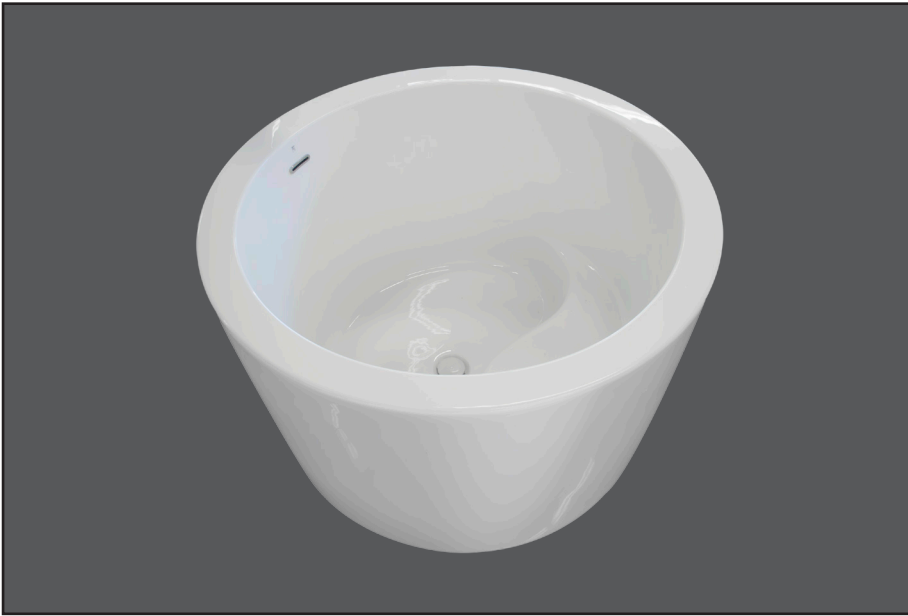




OPES MEM COLLECTION FREESTANDING BATHTUB



DESCRIPTION:

- Contemporary style.
- High gloss / Crack-resistant acrylic.
- Integral slotted overflow & pop up drain included.
- Complies with CSA & IAPMO standards.

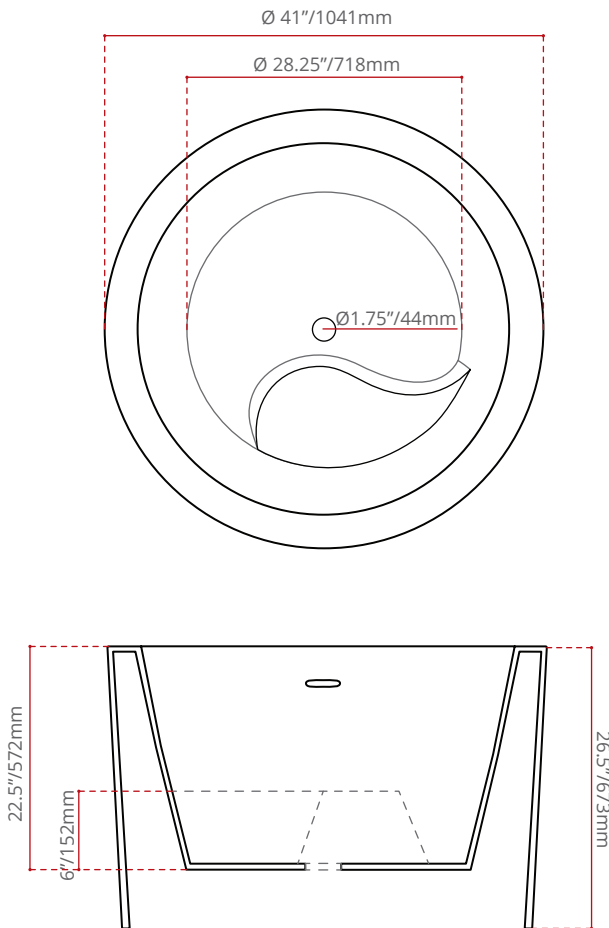
AVAILABLE OPTIONS:

- Exterior colours.

JETTING OPTIONS:

- Lateral Air Jets.
- Air illusion jets.
- Filler Air jets.
- Chromatherapy.
- Aromatherapy.
- Comfort warm system.

- For ease of installation use our Freestanding Faucet and Pump Allaire module -



WATER DEPTH

19.75'' / 502mm

CAPACITY

57 gal.
215 litres of water

SHIPPING DIMENSIONS

43 x 43 x 29'' / 1092 x 1092 x 737mm

NET WEIGHT

35 kg / 77 lbs

GROSS WEIGHT

48 kg / 106 lbs

Measurements may vary $\pm 5\text{mm}$
- Diagram NOT to scale -



Complies With :
CSA B24S1 (2004)
CSA B45.5 (2002)
ANSI Z124.1.2 (2005)